

## EXTRUDED ALUMINUM BRICK VENTS



### MODEL 1-BVF: STORM RESISTANT (FLANGED)

#### APPLICATION

The 1-BVF is an extruded aluminum brick vent with 1" flange. Extruded construction provides a quality finished appearance. A high water stop at the rear and deep overlapping blades with storm stops provide maximum resistance to rain.

### STANDARD CONSTRUCTION

**FRAME:** 1/8" Thick extruded aluminum 6063 T6 construction with 1" wall flange.

**BLADES:** 1/8" thick extruded aluminum 6063 T6 construction.

**BLADE CENTERS:** 1" Centers at 45° head and sill spacing not to exceed frame flange dimension for maximum water resistance.

**ASSEMBLY:** Aluminum 18x16 MESH corrosion resistant.

**FINISH:** Mill finish

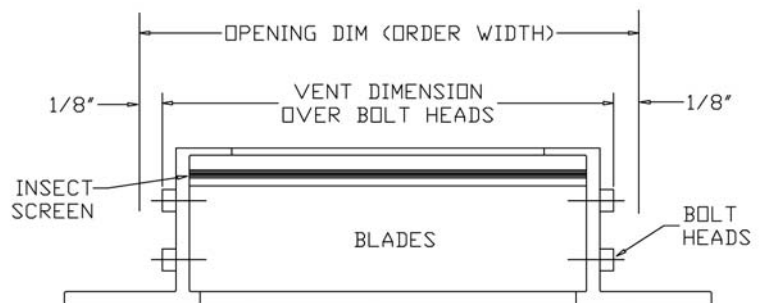
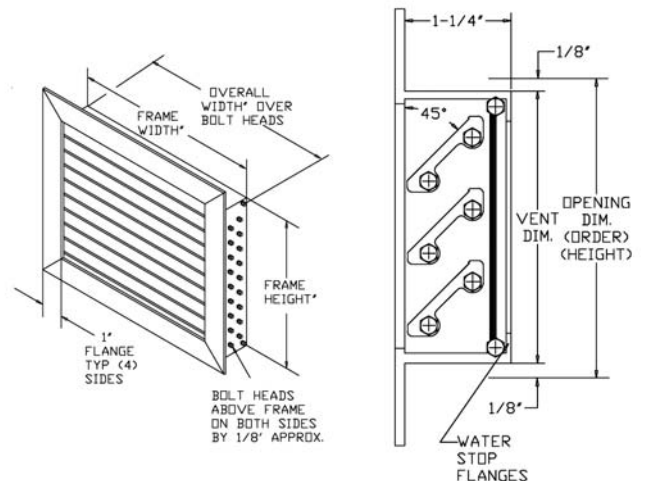
**OPTIONAL FINISHES:**

- (1) Clear Anodize
- (2) Painted
- (3) KYNAR
- (4) Anodize colors

**SIZES:** Minimum Width 4"  
Minimum Height 2-1/4"  
Maximum single section: Unlimited

#### NOTE:

Brick vent will be supplied undersized width -1/4" x order height -1/4" unless specified "actual size".



## EXTRUDED ALUMINUM BRICK VENTS



### MODEL 4-BVCF: STORM RESISTANT (CHANNEL)

#### APPLICATION

The 4-BVCF is an extruded aluminum brick vents with channel frame. Extruded construction provides a quality finished appearance. A high water stop at the rear and deep overlapping blades with storm stops provide maximum resistance to rain.

### STANDARD CONSTRUCTION

**FRAME:** 1/8" Thick extruded aluminum 6063 T6 construction with 1/4" drip ledge top and bottom.

**BLADES:** 1/8" thick extruded aluminum 6063 T6 construction.

**BLADE CENTERS:** 1" Centers at 45° head and sill spacing not to exceed frame flange dimension for maximum water resistance.

**ASSEMBLY:** Aluminum 18x16 MESH corrosion resistant.

**FINISH:** Mill finish

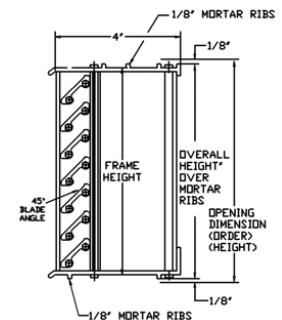
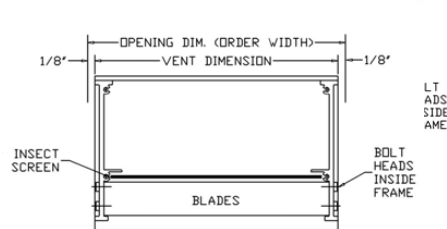
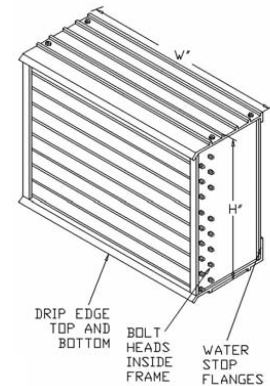
**OPTIONAL FINISHES:**

- (1) Clear Anodize
- (2) Painted
- (3) KYNAR
- (4) Anodize colors

**SIZES:** Minimum Width 4"  
Minimum Height 2-1/4"  
Maximum single section: Unlimited

#### NOTE:

Brick vent will be supplied undersized width -1/4" x order height -1/4" unless specified "actual size".



acts for commerical and residential applica-  
ers in all shapes, sizes and materials.  
the hard to find, hard to make, quick turn  
n help you.