

CERTIFICATE OF COMPLIANCE

Certificate Number 20170404-R10347
Report Reference R10347-19830304
Issue Date 2017-APRIL-04

Issued to: AIR LOUVERS INC
6285 RANDOLPH ST
CITY OF COMMERCE CA 90040

**This is to certify that
representative samples of** FIRE DOOR LOUVERS
Model 1900A

Have been investigated by UL in accordance with the
Standard(s) indicated on this Certificate.

Standard(s) for Safety: UL 10B, Fire Tests of Door Assemblies
UL 10C, Positive Pressure Fire Tests of Door Assemblies

Additional Information: See the UL Online Certifications Directory at
www.ul.com/database for additional information

Only those products bearing the UL Certification Mark should be considered as being covered by UL's
Certification and Follow-Up Service.

Look for the UL Certification Mark on the product.



Bruce Mahrenholz, Director North American Certification Program

UL LLC

Any information and documentation involving UL Mark services are provided on behalf of UL LLC (UL) or any authorized licensee of UL. For questions, please
contact a local UL Customer Service Representative at <http://ul.com/aboutul/locations/>

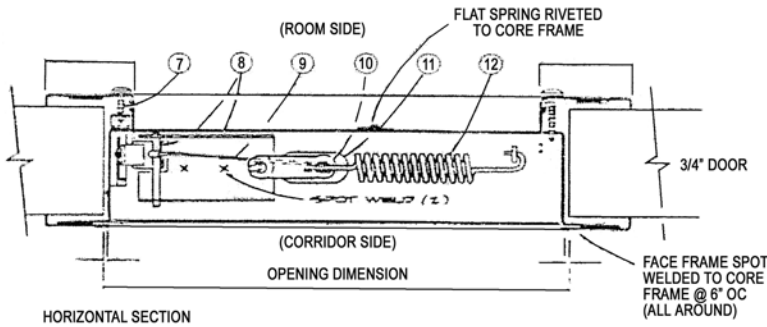


INSTALLATION: FIRE RATED 1900A LOUVER

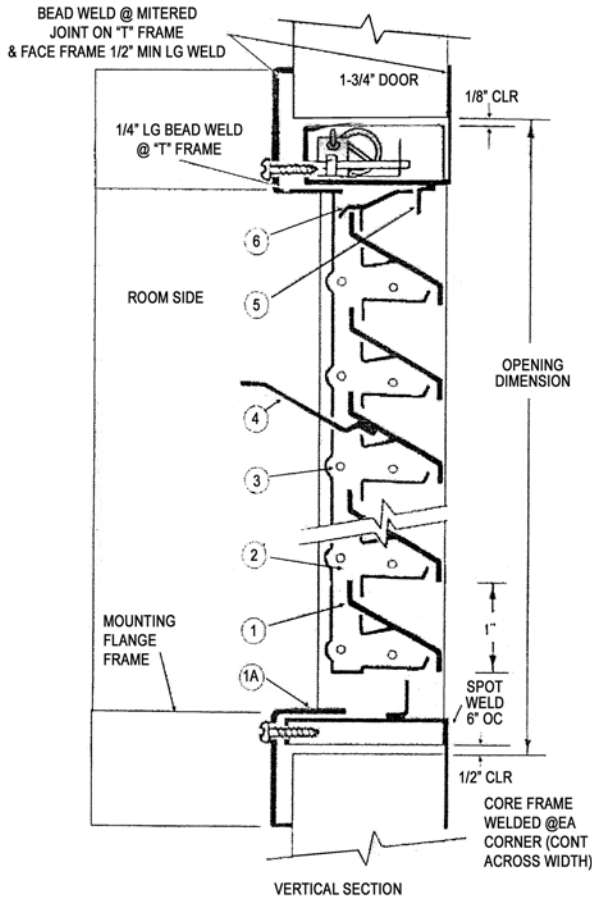
1. Before installing Model 1900A Fire door Louver into a fire door, be sure that the door cutout (order size) is accurate.
2. Position one side of Model 1900A in the door cutout (as it would be installed). Model 1900A requires a single door cutout only for installation.
3. With the frames in place, screw the mounting screws through the pre-punched holes in the frame on the room side. Screw firmly together. Note: Use the 1/2" long screws in hole nearest fusible link.
4. Visually inspect the fusible link to assure that it is unbroken. Do not install if link is not intact. **Paint should not be applied to the fusible link or any of the connecting hardware including the hold-open clip.**

SPECIFICATIONS:

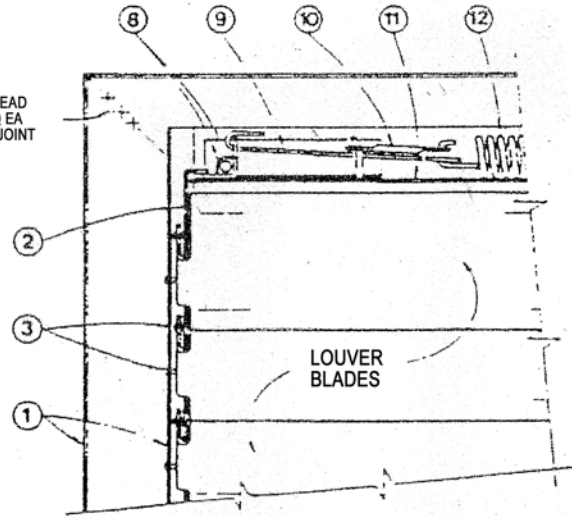
1. Louver Blades 16 ga (.059) Cold Roll Steel.
- 1a. Channel Frame & Flange— Frame 18 ga (.048") CRS.
2. Action Bar 3/8" x .050 CRS.
3. Rivets—Cadmium Plated (.090" ϕ x .21 LG.)
4. Adjusting Tab—Position Approx 1/3 from Bottom of Unit. (Spot Welded to Blade).
5. Blade Stop 5/8" x 3/8" x 18 ga. (.048") CRS. Angle (Spot Welded to Core Frame).
6. Flat Spring—Hold Blades in Open Position (Riveted to Frame).
7. Mounting Screws—#8 Phillips Head (3 @ 3/4" LG. & 1 @ 1/2" LG.)
8. Rocker Arm and Closing Bar and Housing.
9. "S" Hook—.080" Cadmium Plated Steel.
10. Fusible Link—Design Temp 165° F Maximum.
11. Heat Opening—1/2" x 1".
12. Tension Spring—3" LG x 1/2" ϕ x .063" Thk Cadmium Plated Steel.



HORIZONTAL SECTION



VERTICAL SECTION



PARTIAL FRONT ELEVATION (CLOSED POSITION)
(FACE FLANGE REMOVED FOR CLARITY)



CONSTRUCTION PRODUCTS GROUP

DISTRIBUTED BY BESTLOUVER LLC
NAPLES, FLORIDA 866-257-7449